



International Academy of Public Health (IAPH)

**Professional Training for
Public Health Workforce**



Introduction

The International Academy of Public Health (IAPH) is a multidisciplinary professional development institution dedicated to strengthening the public health workforce. As a specialized academy, IAPH offers a wide range of fields of study, programs, and courses tailored to meet the diverse needs of public health professionals.

Our training portfolio spans long-term, medium-term, and short-term programs across key public health domains. These initiatives are designed to advance public health services throughout the Eastern Mediterranean Region (EMR) by building the capacity and competencies of the workforce.

IAPH is more than just an addition to the existing landscape of public health education in the EMR. It stands apart through its distinctive approach that emphasizes practice-based learning, modeled after residency-style training. This model departs from traditional academic and theoretical instruction, which often falls short in preparing graduates for the complex and evolving challenges facing today's public health systems.

To fulfill its mission, IAPH employs innovative, field-based learning strategies that empower participants with practical skills and knowledge that can be applied immediately in real-world settings.

Our programs aim to enhance leadership, improve health system performance, and promote better population health outcomes at both national and regional levels. IAPH is actively working to address nationally identified gaps in public health knowledge and practice.





Vision

Attain excellence in public health professionals' education, capacity, and innovation at regional and global spheres.



Mission

To promote the public health workforce mass capable of addressing the challenges of strengthening national health systems and improving population health in the Region and beyond.



Goal

To design and deliver quality postgraduate educational and training programs on different public health subject matters to fill existing and emerging regional gaps.

Values

Innovation

We strive to provide training that encourages innovative thinking and action.

Learning

We value learning as a core element and principle that guides development and transformation.

Excellence

We are committed to excellence and adopt the highest international standards for training programs.

Partnership

We work with our partners to identify training needs and offer tailored solutions.

Diversity

We value cultural diversity and inclusiveness based on respect for the other.

Strategic Objectives

SO 1

Strengthening the institutional capacity of IAPH

SO 2

Transforming public health professionals education towards a credible practice-based model

SO 3

Scaling up public health professionals education programs in response to regional needs

SO 4

Promoting the professionalization of the public health workforce in the region

Accreditation

IAPH adopts the highest standards of universally accredited training in public health education and is accredited by international well-known accreditation bodies:

- The Accreditation Service for International Colleges (ASIC), which is an internationally renowned quality standard for schools, colleges, universities, and online learning providers.
- Continuing Professional Development Certification Service in the UK (CPD UK), which is a globally recognized accrediting body that certifies training and learning activities to ensure they meet professional development standards across various sectors.
- All training curricula follow international standards for competencies and are accredited by the Agency for Public Health Education Accreditation (APHEA).



Partnerships

IAPH values partnerships as a means of exchanging knowledge and expertise. These partnerships include curricula development, participation in training, and mentoring.

We work with our partners to identify their training needs and, accordingly, offer tailored solutions.

Training programs can be customized in duration and content to meet the specific needs of different organizations.

We are committed to building sustainable partnerships that strengthen institutional capacity and enhance the quality of public health practice.

All training programs are designed with a focus on evidence-based content, regional relevance, and measurable impact.

IAPH's targeted partners are ministries of health, public health institutes, academic institutes, and national and international organizations.

Training Approaches

We understand the complexities of public health sector work, and the improbability of forgoing work for extended periods. Therefore, IAPH has designed flexible training approaches that fit the schedule of our residents and students:

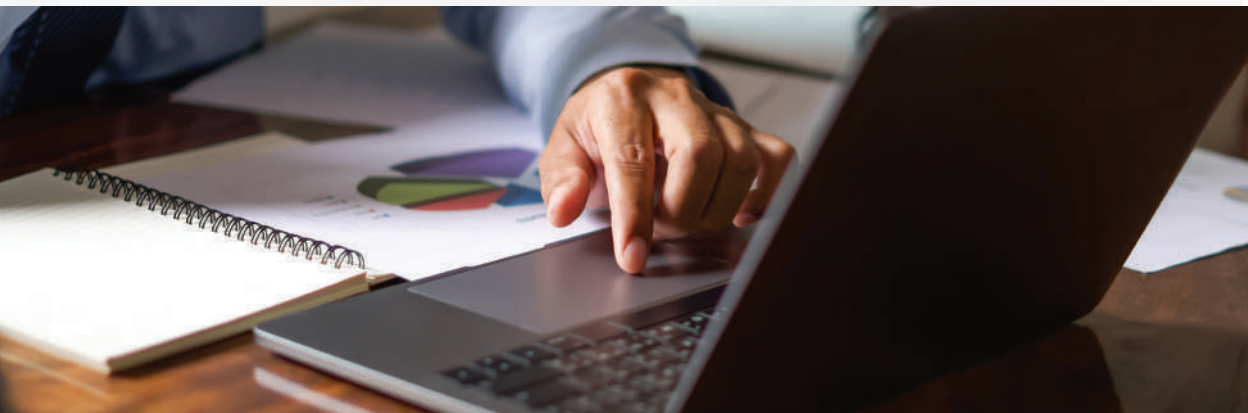
- Online training
- In-class training
- Blended training

Who can Join

IAPH training programs are open to public health professionals from various medical and health science backgrounds. Applicants from any discipline interested in public health careers are also welcome.

Teaching Faculty and Instructors

IAPH has a pool of highly professional trainers who are both content experts and teaching masters. Trainers and instructors have regional and international experience from over 12 countries in the EMR, Europe and the US. Their expertise ranges from field, academia, governmental and non-governmental organizations. All trainers are carefully selected based on their practical experience, subject matter expertise, and instructional effectiveness. They are committed to delivering interactive, context-relevant, and evidence-based training that meets the needs of diverse public health professionals.



Why choose IAPH?

Internationally Accredited

Comprehensive Public Health Training Portfolio

Multiple Certificates Training Levels

Competency-Based Training Approach

Public Health Residency Model Training

Highly Qualified Instructor-Led Trainings

Diverse Training Approaches

Addressing EMR Public Health Needs

Customized Training Availability

Multilingual Training Programs



IAPH Advisory Board

The Advisory Board is a high-level body at IAPH entrusted with strategic advisory and guidance role.

Membership of the Advisory Board is drawn from among the high profile, experienced, and distinguished personalities from within and outside the Region.

The Board, together with organizational entities, support and enhance the mandate of IAPH in strengthening key capacities for public health in the region.

Click on the link below to find out more about our Advisory Board members:
<https://iaph.org/en/iaph/advisory-board/>

IAPH Scientific Council

The Scientific Council represents the highest academic/scientific body within IAPH and shall be the referral point for all the scientific and academic issues.

The Scientific Council leads the Specialty Committees that represent the Knowledge base and referral point for the specific specialty program and disciplinary public health issues.

Click on the link below to find out more about our scientific council members:
<https://iaph.org/en/iaph/scientific-council/>



Training Structure and Certification

IAPH provides trainings at different durations that can be customized to fit the needs of different organizations as follows:

- Executive Professional Master: A comprehensive, one-year program designed for public health professionals. The program integrates theoretical knowledge with practical application across sub-specialized modules and culminates in a capstone project or thesis that addresses real-world public health challenges.
- Professional Diploma: A six-month program comprising a group of technical diploma programs that pertain to the same field of study. It aims to provide in-depth knowledge and professional training, building a solid foundation for specialized public health competencies.
- Technical Diploma: It includes four to five short courses intermixed with field training.
- Short Courses: Providing "Successful Completion Certificate". These are time-effective courses that delve in-depth into specific topics. The total duration is one to two weeks.


Field of Study	Executive Professional Master
One Year	
Programs	Professional Diploma
6 Months	
Programs	Technical Diploma
3 Months	
Courses	Successful Completion Certificate
5 Days	



Training


IAPH delivers quality postgraduate professional educational and training programs in different public health subject matters/disciplines. It provides a diverse number of programs and courses as below:

Postgraduate professional training programs covering the full spectrum of the public health fields, the training portfolio consists of:




18

Fields of Study



42

Programs



150+

Courses

On-the-job training / Project

On-the-job-training / Project is a hands-on method to teach the skills needed by the public health workforce to perform a specific/multiple competencies at the workplace. During the On-the-job-training / Project, residents will practice the knowledge and skills obtained during their didactic training.

The general objective of the field work is to familiarize the residents with real-life scenarios and to acquaint them with health leadership and management to apply and practice the skills they gain with the guidance of a dedicated mentor.

Program 1	Program 2	Program 3
Course 1	Course 1	Course 1
Course 2	Course 2	Course 2
Course 3	Course 3	Course 3
Course 4	Course 4	Course 4
Course 5	Course 5	Course 5
On-the-job training/ Project	On-the-job training/ Project	On-the-job training/ Project

Training Directory

Fields of Study

(Professional Diploma and Executive Professional Master):

1. Public Health Emergency Management (PHEM)
2. Anti-Microbial Resistance (AMR)
3. Health Research and Studies (RS)
4. Leadership and Management (LM)
5. Public Health (PH)
6. Environmental Health (ENV)
7. Occupational Health (OCH)
8. Non-Communicable Diseases (NCD)
9. Biosafety in Public Health Laboratories (BSL)
10. Health Economics (HE)
11. Communicable Diseases (CD)
12. Global Health (GH)
13. Women and Child Health (WCH)
14. Public Health Education (PHE)
15. Health Informatics (HI)
16. One Health (OH)
17. Primary Health Care (PHC)
18. Applied Epidemiology (Epidemiology in Practice)

Programs (Technical Diploma)

- Technical Diploma in Research Methods and Analysis
- Technical Diploma in Environmental Risk Assessment and Communication
- Technical Diploma in Antimicrobial Resistance
- Technical Diploma in Global Public Health
- Technical Diploma in Foundations of One Health
- Technical Diploma in Applied Public Health Emergency Management
- Technical Diploma in Managing Essential Health Services in Emergencies
- Technical Diploma in Non-Communicable Diseases

Courses

- Introduction to Public Health
- Management and Leadership
- Principles of Public Health Emergency Management
- Public Health Interventions in Emergencies
- Human Conflicts and Humanitarian Work
- Research Methodology
- Public Health Tools and Techniques in Challenging Conditions
- Public Health Risk Management
- Risk Communication
- Public Health Management of Mass Gatherings
- Community Based Risk Management
- Biostatistics
- Communicable and Noncommunicable Diseases in Emergencies
- Women and child health in humanitarian setting
- Nutrition in Emergencies
- Environmental Health in Emergencies
- Scientific Writing

- Introduction to Public Health
- Antimicrobial Stewardship-Level 1
- Antimicrobial Resistance-Level 1
- Infection Control-Level 1
- Basic Epidemiology
- Research Methods and Writing
- Antimicrobial Resistance-Level 2
- Antimicrobial Stewardship-Level 2
- Applied Research in Anti-Microbial Resistance
- Multidrug Resistance
- Infection Control-Level 2
- Antimicrobial Stewardship-Level 3
- Management and Leadership
- Scientific Writing

Courses

- Introduction to Research Methods
 - Research Designs
 - Basic Concepts in Research Methodology
 - Applied Research in Public Health
 - The Statistical Tools (Excel)
 - Advanced Research Methods
 - Advanced Statistical Methods
 - The Statistical Tools (Epi Info)
 - The Statistical Package For Social Sciences (IBM SPSS)
 - Scientific Writing
- Strategic Planning and Leadership
 - Health Project Management
 - Resources Management
 - Communication Skills
 - Effective Training
- Public Health Management
 - Epidemiology of NCDs
 - NCDs Surveillance, Prevention, and Control
 - Intermediate Biostatistics
 - Advanced Epidemiologic Methods
 - Research Methods and Writing
 - Health economics in public health
 - Communicable Diseases and Surveillance
 - Health Promotion & Disease Prevention
 - Artificial intelligence (AI) and Machine Learning (ML) in Public Health
 - Governance of Population Health and Well-being
 - Women's Health
 - Environmental and Occupational Health
 - Primary Community Health Care and Quality of Service
- Introduction to Public Health
 - Basic Epidemiology
 - Epidemiology of Environmental and Occupational Health
 - Introduction to Global Environmental Health
 - Principles of Toxicology
 - Food Safety and Public Health
 - Water Quality Management
 - Air Pollution and Air Sampling
 - Environmental Health in Emergencies
 - Applied Research in Environmental Health
 - Environmental Risk Assessment
 - Environmental Risk Management
 - Environmental Risk Communication
 - Management and Leadership
 - Scientific Writing

- Introduction to Public Health
- Basic Epidemiology
- Epidemiology of Environmental and Occupational Health
- Introduction to Global Environmental Health
- Principles of Toxicology
- Occupational Health and Safety
- Indoor Air Quality
- Infection Prevention and Control
- Hazardous Waste Management
- Applied Research in Occupational Health
- Occupational Risk Assessment
- Occupational Risk Management
- Occupational Risk Communication
- Management and Leadership
- Scientific Writing

- Introduction to Public Health
- Epidemiology of Noncommunicable Diseases
- Noncommunicable Disease Surveillance
- Health Promotion for Noncommunicable Diseases
- Prevention and Control of Noncommunicable Diseases
- Epidemiology of Mental Health Disorders
- Mental Health Programs and Interventions
- Mental Health in Complex Emergencies
- Research in Mental Health
- Applied Research in Noncommunicable Diseases
- Advanced Research Methods
- Advanced Statistical Methods
- The Statistical Tools (Epi Info)
- The statistical Package for Social Sciences (IBM SPSS)
- Scientific Writing

- Introduction to Public Health
- Biosafety in Public Health Laboratories
- Bio Risk Classification
- Bio Risk Assessment and Management
- Laboratory Acquired Infections
- Risk Mitigation: Engineering Controls
- Risk Mitigation: Safe Practices
- Shipping the Biological Materials
- Applied Research in Laboratory and Biosafety
- Introduction to Public Health Laboratories Management
- Biosecurity Management
- Biological Waste Management
- Chemical Waste Management
- Emergency Management in the Laboratory

- Health System Management
- Introduction to Health Economics
- Principles of Healthcare Financing
- Economic Evaluation
- Applied Research for Health Economics

- PHC Professionals Core Skills
- Patient-centered Care and Self-management Support
- Evidence-based Practices
- Quality Improvement Techniques and Practice-based Learning
- System-based Practice and Utilization of Informatics
- Introduction to Public Health
- Health Promotion
- Screening & Monitoring
- Non-communicable Diseases
- Mental health
- Kidney diseases
- Medical Emergencies
- Communicable diseases
- Surveillance and outbreaks
- Public Health Emergency Management
- Child Health
- Maternal Health
- Geriatric Medicine
- Palliative care
- Common Summer Diseases
- Common Eye disease
- Common Skin diseases
- Common Winter Diseases
- Infection Prevention And Control
- Foundations in Public Health Research

- Fundamentals of Communicable Diseases
- Role of Laboratory in Communicable Diseases
- Epidemiology of Communicable Diseases
- Communicable Diseases in Emergencies
- Epidemics Detection and Control
- Vaccine Preventable Diseases
- Neglected Tropical Diseases
- Vector-Borne Diseases
- Zoonotic Diseases
- Sexually Transmitted Infections and HIV/AIDS
- Infectious Respiratory Diseases and Tuberculosis
- Hospital-Acquired Infection and Viral Hepatitis
- Blinding Diseases
- Epidemics and Emerging Infectious Diseases
- Disease Targeted for Elimination or Eradication
- Communicable Diseases Programs
- Evidence-Based Public Health
- Applied Research for Communicable Diseases


- Introduction to Public Health
- Foundations in Global Health
- Global Demography and Burden of Disease
- Introduction to Global Environmental Health
- Social Determinants and Inequity
- Basic Epidemiology
- Management and Leadership
- Health Project Management
- Global Migration
- The Global Health Workforce
- Global Health Rights and Regulations
- Noncommunicable Diseases
- Communicable Diseases
- Violence and Global Health Security
- Reproductive and Perinatal Epidemiology
- Research Methodology
- Biostatistics
- Humanitarian Assistance
- Strategic Planning and Leadership
- Health Economics
- Advanced Research Methods
- Scientific Writing





 www.iaph.org

 info@iaph.org

 +962 77 500 0102
+962 79 500 0864

Empowered by

